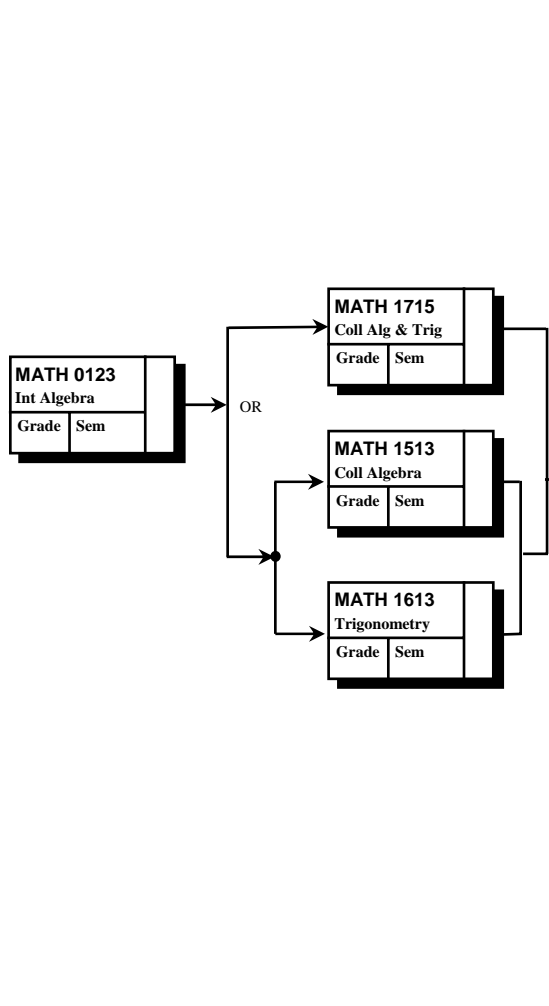


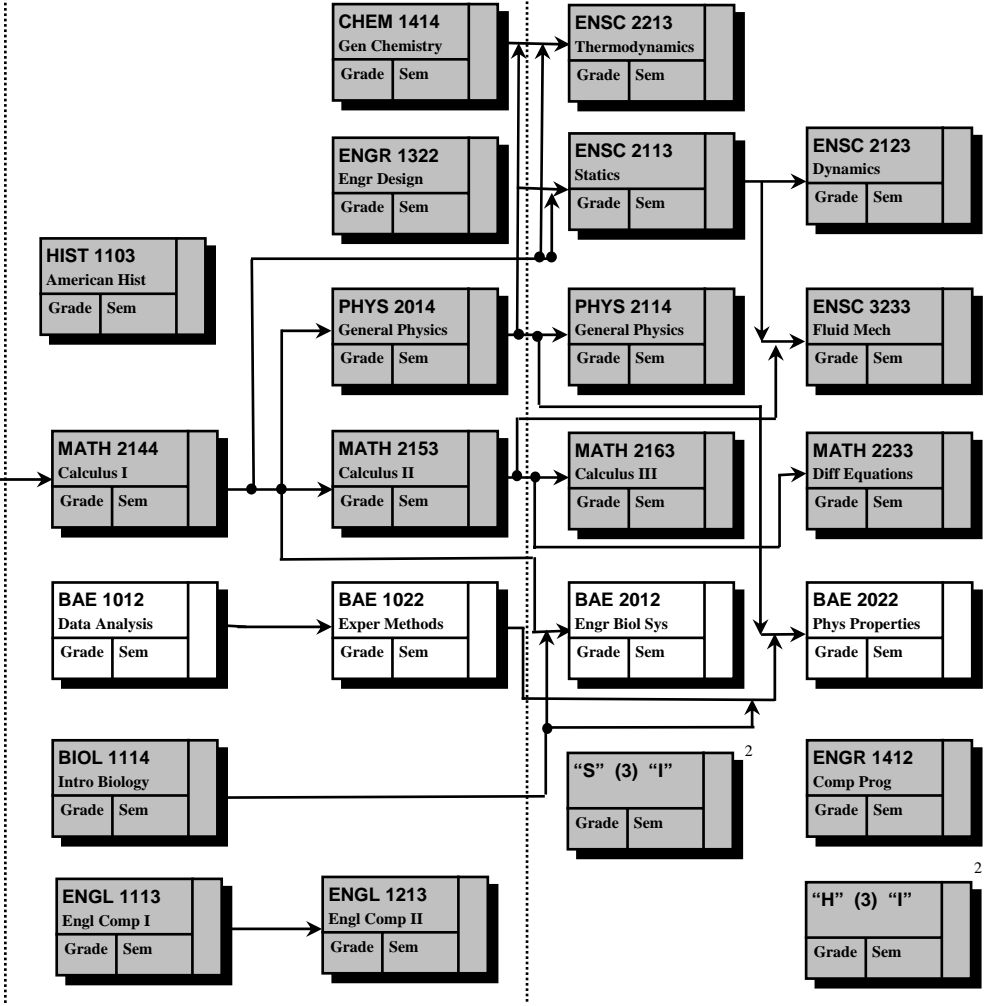
Name:
Advisor:

Preparatory Courses



Year 1

Year 2



Admission Requirements for the Biosystems Engineering Professional School.

To be admitted into BAE Professional School - to be eligible to take the upper level BAE courses - the student shall have met the Professional School requirements. They are:

- Completion of at least 60 college level semester credit hours (SCH).
- Completion of at least 12 SCH from OSU.
- Completion of MATH 2144, 2153, and 2163; PHYS 2014 and 2114; CHEM 1414; BIOL 1114; ENSC 2113, ENSC 3233, plus two additional ENSC courses; ENGL 1113; BAE 2012 and 2022.
- An overall GPA of 2.3 or better at OSU.
- A GPA of 2.5 or better in all above courses plus any additional math or engineering courses taken at OSU (including STAT, MATH, PHYS, CHEM, ENGR, ENSC, BAE).
- A final grade of "C" or better in each of the above-mentioned courses.

NOTE: This flow chart is for planning purposes only. Students matriculating in 2006 must meet the degree requirements as stated on the official degree requirement sheet dated "Academic Year 2006-2007."

Horizontal arrows indicate prerequisites.

1. At least 6 hours designated "H" and 6 hours designated "S". Of these, 3 hours need to meet the International Dimension "I". Consult the BAE advisor for the BAE General Education Elective Plan form.

Shaded Areas Indicate Common Engineering Curriculum Requirements

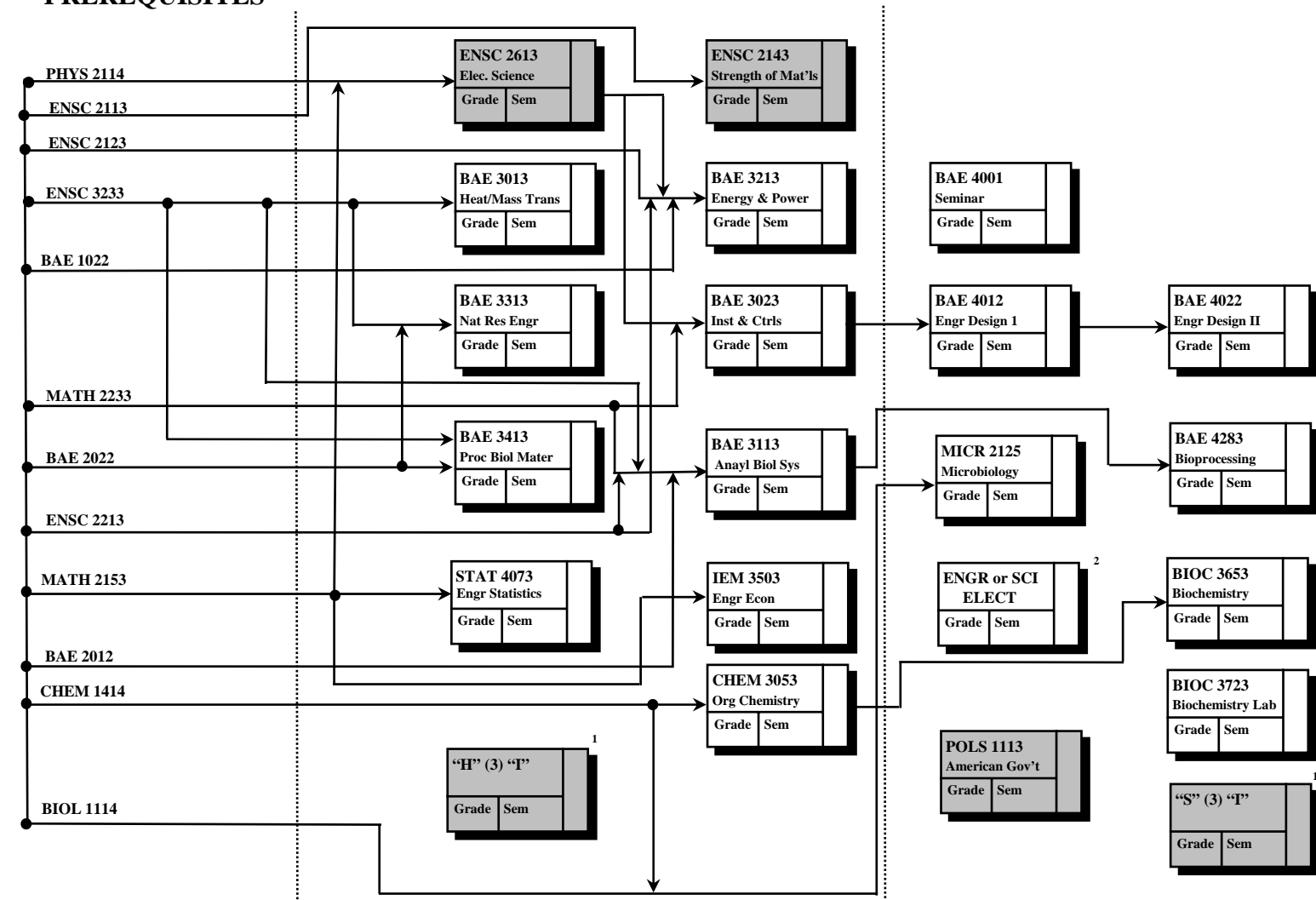
Name:

Advisor:

Year 3

Year 4

PREREQUISITES



MASTER'S PROGRAMS

Criteria for admission to the Graduate College to pursue the Master of Science include:

1. receive a B.S. degree from an accredited institution
2. academic performance in undergraduate work at a level that indicates a high probability of success in a graduate program requiring a 3.0/4.0 minimum grade point average.
3. recommended for admission to the Graduate College by a Professional School in the College of Engineering.

For further information, contact the School or the Office of the Dean of Engineering.

A flexible study plan is designed to meet each student's individual goals.

2. 4 hours of courses to be selected from an approved list upon consultation with the advisor.

* A "C" or better is required in each course that is a prerequisite for a major course.